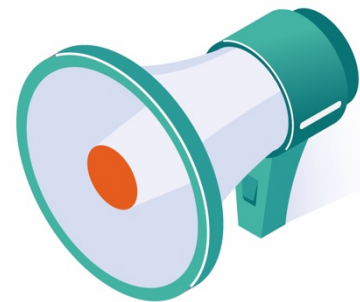


Welcome to the seventh TELESCOPE newsletter where we highlight study activities completed in the prior month. As of 11 November 2021 a total of 1,335 samples have been collected in the TELESCOPE study with 176 samples received in the month of October 2021.

Welcome to the Study!

New Sites Activated in October 2021 include:



- **James Earl**
Boise Idaho, USA
- **Maziar Lalezary**
Beverly Hills, CA, USA
- **Sweta Kavali**
St. Louis, MO, USA
- **Dante Pieramici**
Santa Barbara, CA, USA
- **Tracie Malsom**
Fargo, ND, USA
- **Jeremiah Brown**
San Antonio, TX, USA
- **Ayham Skaf**
Chula Vista, CA, USA
- **Brittney Statler**
Fort Collins, CO, USA
- **Bal Dhillon**
Edinburgh, Scotland

In Case You Missed It

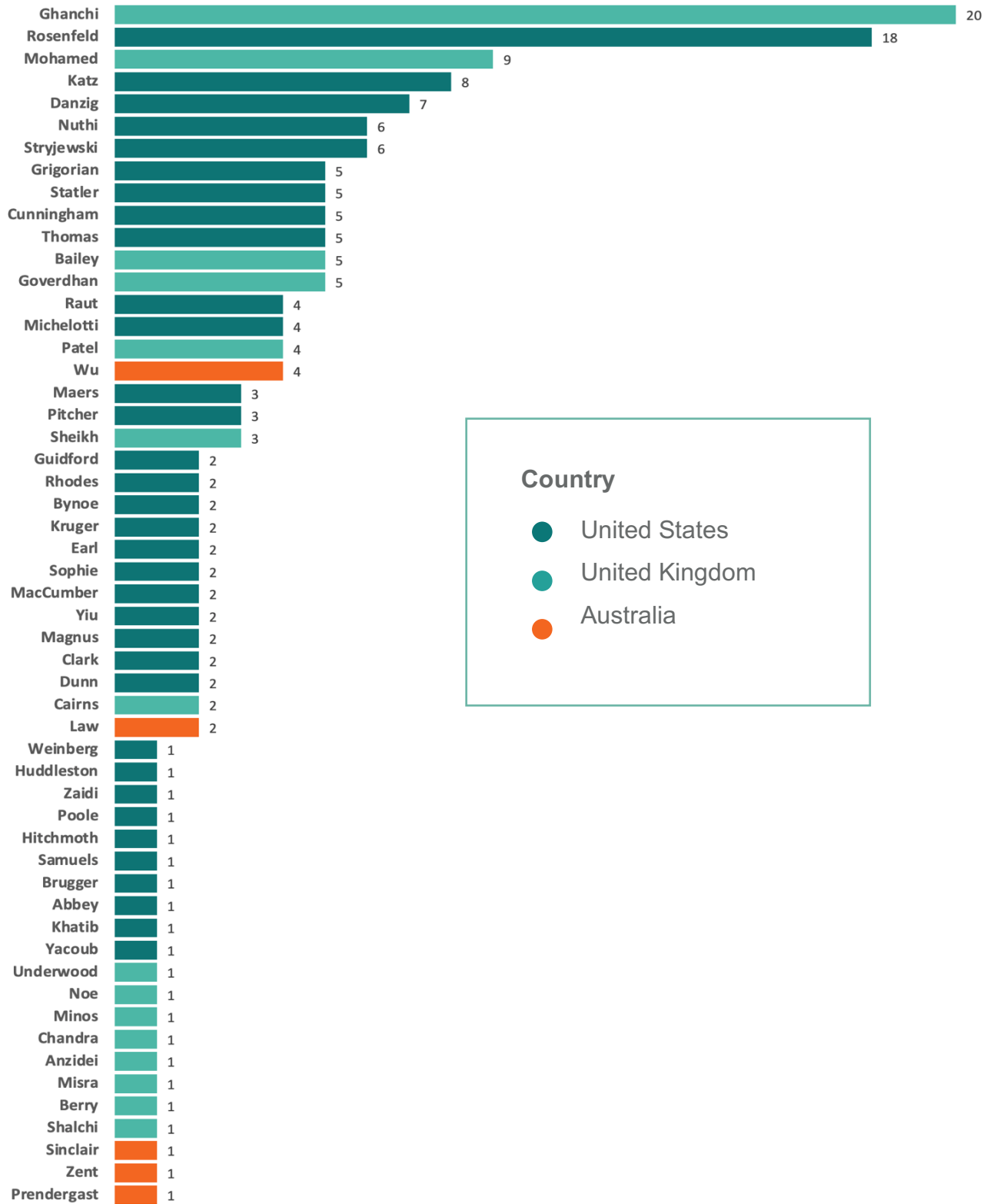


Dr. Szilárd Kiss, a member of our Clinical Advisory Board, gave a FOCUS update presentation at Retina Society on September 30, 2021. Presentation materials can be found here gyroscopetx.com/publications/

We are sharing this information solely for the purposes of providing background information on the development program given your role in referring potential patients.



SAMPLES COLLECTED IN OCTOBER 2021



Country

- United States
- United Kingdom
- Australia



Site Spotlight!

Dr Stephanie Cairns is an advanced low vision Optometrist whose career has included working in primary eyecare, both in the UK and New Zealand, alongside 11 years working for the Gateshead Low Vision Clinic, run by Vision and Hearing Support - a local charity assisting people who are visually impaired, deaf, or hard of hearing on their journey to independence. Stephanie's vast experience includes treatment of visually impaired patients of all ages and abilities due to various causes.



She was recognized by her peers with the first ever the Low Vision Award at the Optician Awards in the UK in 2019 due to her work raising awareness of vision loss amongst the wider regional NHS and promoting collaboration between professional healthcare providers.

The TELESCOPE study has been her first experience as a PI in clinical research, and her contribution to the study has been exemplary. She has recruited 31 patients into the study and has referred 7 patients to Prof. Steel's HORIZON study in Sunderland, UK. Stephanie is dedicated to excellent patient care and we'd like to recognize her for her outstanding performance in TELESCOPE, as well as her dedication and enthusiasm as she contributes to the advancement of patient care via clinical research.



QUICK TIPS

WINTER IS COMING: For those of you in The North consider remote collection due to increased travel headaches, winter storms, and possible COVID spikes. Email TelescopePDL@gyroscopetx.com for more information on remote collection

Please file a copy of this correspondence into the Investigator's Site File (ISF).

